



# STS NEWSLETTER

A bimonthly publication of Street Tree Seminar  
Your Los Angeles/Orange County Regional Forest Council

## Tools of the Trade with Carl Mellinger and Jonathan Flournoy – by Adrian Sanchez

In response to the COVID 19 pandemic, we continue to hold our meetings online in lieu of in-person meetings.

Carl and Jonathan spoke about tools they use for assessing tree health and stability. They introduced us to The Arborsonic Tomograph, Arbotom and the Resistograph. Along with experience and traditional basic tools like a shovel, pick, and rubber mallet, these tools are extremely helpful. Sensors are used that create soundwaves in the tree. This sound transmission travels through the wood and creates imaging used by Arborists to "look inside" the tree.

The 2-D maps that are generated show cracks and decay in the trunk and their location. If the waves travel fast, that indicates the wood is healthy and there are no defects present. Concrete or metal sometimes found in trees may distort the Tomograph data. The 2-D maps also show geometric stability and stability lost to those defects. Those found towards the middle of the wood are acceptable, but not along the edges where the stability would be compromised more. With this data at hand the Arborist can make specific pruning, reduction, or removal recommendations.

The Resistograph is another complementary tool. By drilling into the tree, it records the resistance that is encountered. Low resistance indicates there are cracks or decay, while high resistance means healthy or strong wood. You can obtain a "baseline" measurement from an area of healthy wood in the tree for comparison. The Resistograph is used to double check and corroborate initial data collected by the Arbotom sensors.

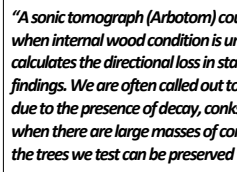
Testing is done for high value, heritage trees, or trees worthy of preservation. Visible conks or decay, or just a nervous homeowner are also reasons.

Species is important to know. Sycamores add reaction wood faster than it decays. Their recovery is much more aggressive than others species. Sycamore wood becomes stronger as it gets older. Deodar cedars may show very damaged bark, but are mostly solid inside. Different fungi cause different reaction, decay and levels of compartmentalization in trees. These factors along with the impressive accuracy of the instruments enable the Arborist to arrive at the most informed recommendations. Ultimately, they found that these tools are used more to preserve trees than to condemn them.

### ABOUT OUR SPEAKERS:



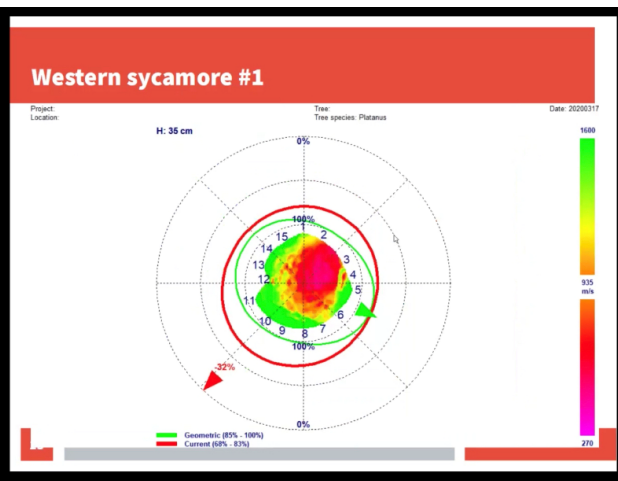
*Jonathan is a Certified Arborist with a bachelor's in Ecology and a minor in Forestry. He has been an arborist for 5 years, and has been working in the field using these instruments with Carl for over 3 years.*



*"A sonic tomograph (Arbotom) coupled with a resistance drill (Resistograph) can be a very useful tool in situations when internal wood condition is unclear. In simplified terms, the Arbotom provides an "X-ray" of internal defects and calculates the directional loss in stability due to the defects. The resistance drill is then used to calibrate the Arbotom's findings. We are often called out to use these instruments when the tree owner or their arborist is nervous about a tree due to the presence of decay, conks, or other conditions. More often than not, we find less decay than expected even when there are large masses of conks at the base of trees or other "shocking" symptoms. As a result, we often find that the trees we test can be preserved with mitigation measures." - Jonathan Flournoy*



*Carl is a Certified Arborist, an RCA, and TRAQ Certified. Carl started Mellinger Tree Service in 1984 and ran it until it was acquired by Bartlett last year - he continues his work thru Carl Mellinger Consulting, LLC. Carl is a past president of the Western Chapter and currently sits on the Britton Fund board. He was recognized as an ISA True Professional of Arboriculture in 2011 and received the Award of Merit from Western Chapter in 2009 and the President's Award in 2002. Carl loves the outdoors - spending his free time fishing and skiing.*



Western sycamore #1

Western sycamore #1

## Learn Over Lunch



Join TreePeople for a virtual two-course lunch to hear about and discuss urban forestry research topics from Los Angeles. Edith de Guzman, Director of Research, will share her insights on:

**APPETIZER:** Fostering tree stewardship among residents of environmental justice communities. Urban trees can play a significant role in making cities resilient to weather and climate extremes and in protecting human and ecosystem health and safety, yet insufficient municipal budgets, among other factors, result in urban trees facing challenges to surviving and thriving. Absent significant maintenance funding, involving community volunteers remains critical to urban forest health.

**MAIN COURSE:** The latest research on how trees save lives from being lost to extreme heat. Extreme heat and its health impacts are on the rise. You'll hear about the efforts of the Los Angeles Urban Cooling Collaborative -- a multi-disciplinary, national partnership of researchers and practitioners led by TreePeople that is working to understand and implement urban cooling strategies in Los Angeles.

After Edith shares, we will discuss in small group breakout rooms, giving you the chance to chat with your peers who are planting and caring for trees across the state! These sessions will *not* be recorded, so be sure to join us live.

REGISTER at [www.californiareleaf.org](http://www.californiareleaf.org)

## National Public Lands

Established in 1994 and held annually on the fourth Saturday in September, National Public Lands Day is the nation's largest single-day volunteer effort. It celebrates the connection between people and green space in their community, inspires environmental stewardship, and encourages use of open space for education, recreation, and health benefits. This year, National Public Lands Day falls on September 26, 2020.

There are many ways to participate in National Public Lands Day.- To find an event online or near you, visit [https://www.nps.gov/subjects/npscelebrates/public-lands-day.htm#CP\\_JUMP\\_6237013](https://www.nps.gov/subjects/npscelebrates/public-lands-day.htm#CP_JUMP_6237013)

To visit a National park for free, visit <https://www.nps.gov/playyourvisit/fee-free-parks-state.htm>



## TREES ARE ESSENTIAL CAMPAIGN



The coronavirus crisis has left all Californians, and many within our industry, struggling to stay afloat economically. There is not a segment of the urban and community forestry industry that has not been impacted. California municipalities have, and will continue to, cut budgets as the public health emergency continues. Urban forestry and tree maintenance budgets are being slashed for short-term savings (with greater costs later).

**These cuts impact jobs, public safety, and environmental and public health during this time of crisis** – when the services, values and benefits derived from healthy urban nature and tree canopies are truly essential to well-being. This is a time for more investment – not less. To protect your community trees it's time for everyone (yes you) to step out & speak up!

Access to urban nature is a public and mental health necessity. Everyone is entitled to all the benefits that nature affords – no matter what their zip code. Time to pivot. Time to redouble efforts. Time to show decision makers that **TREES ARE ESSENTIAL!** Time to speak for the trees, and in doing so, speak for the health of your family, friends, neighbors and communities. Join the campaign! Visit [www.caucf.org](http://www.caucf.org) to get involved.



October General Meeting



OCTOBER 22, 2020

MAKE IT EASY:

Engaging with industry professionals and creating a Tree Toolbox to share and show your expertise

CREATING CONNECTIONS through a Tree Toolbox for Clients, the Public and Industry Professionals, and educational opportunities—“Arborists are commonly reviewing decisions, designs made and trees installed by other industry professionals. Also, in the eyes of our clients, we are the experts. How are we connecting the dots and ensuring our clients and green partners have the latest knowledge, best management practices, and are creating a green infrastructure that has the potential to truly benefit our urban canopy for decades to come? This talk will focus on Creating a “Tree Toolbox” and “Making it Easy” to make trees a priority on projects. Creating a “Tree Toolbox” of industry handouts, best management practices, and the latest information, is an easy way to be the “go to source” for your clients.

*This talk will help you to create your own TREE TOOLBOX, and finding creative ways to engage your clients, industry professionals and how to find and develop these opportunities for your own arboricultural business.*

*Teaching at one of the largest Landscape Architecture programs in the US has provided me the opportunity to develop a Trees Materials curriculum that engages the students and public, develops their critical thinking, provides an excellent beginning understanding of trees, their characteristics, biology, growth potential and all aspects related to their selection, install and care.” Lisa Smith, Presenter*



Lisa Smith is a Registered Consulting Arborist #464 and owner of The Tree Resource, a southern California tree-consulting firm, providing all aspects of tree management and preservation. She began twenty-five years ago, working for one of the nation’s largest tree contractors, providing arboricultural programs for projects throughout southern California, working in many arenas of the tree industry, from installation, large-scale maintenance, IPM (Integrated Pest Management), pruning guidelines, and risk management as a Board Certified Master Arborist and Qualified Tree Risk Assessor. She enjoys providing educational opportunities for industry professionals and affiliate green groups, including teaching for the UCLA Extension Landscape Architecture program. As past president of the Western Chapter of the International Society of Arboriculture, Lisa also remains active on the board.



THURSDAY  
OCTOBER 22, 2020

10:30 AM–12:30 PM

PRESENTED ONLINE  
VIA GOTOMEETING

\$15.00 /member  
\$20.00/nonmember  
(*\$5.00 goes towards  
Scholarship Fund*)

1.5 CEU Available

STS, INC.

PO Box 6415  
Anaheim, CA 92816  
714.639.6516

TO REGISTER – VISIT  
[www.streettreeseminar.com](http://www.streettreeseminar.com)





**PRESIDENT**

George Olekszak  
Tree Pros  
15077 La Palma Dr  
Chino, CA 91710  
909/548-0033

**PAST PRESIDENT**

Emina Darakij  
1044 Prospect Blvd  
Pasadena, CA 91103  
626/792-0586

**VICE PRESIDENT**

Lucas Mitchell  
City of Rancho Cucamonga  
8794 Lion Street  
RC, CA 91730  
909/477-2730

**SECRETARY**

Adrian Sanchez  
City of Los Angeles  
1149 S. Broadway  
Los Angeles, CA 90015  
213/847-3070

**TREASURER**

Rachel Malarich  
City of Los Angeles  
1149 S. Broadway  
Los Angeles, CA 90015  
213/365-7400

**DIRECTORS**

Dawn Fluharty  
Arborjet  
99 Blueberry Hill Rd  
Londonderry, NH 01801  
650/879-9622

Ashlyn Pouvaranukoah  
arbormark, inc.  
356 W Longden Ave  
Arcadia, CA 91007

Alex Lopez  
LA Conservation Corps  
1020 S Fickett St  
Los Angeles, CA 90023  
213/944-1078

**MEMBERSHIP**

Rachel Malarich  
213/365-7400

**SCHOLARSHIP**

Al Remyn  
714/538-3821

**MAILING ADDRESS**

Street Tree Seminar, Inc.  
P.O. Box 6415  
Anaheim, CA 92816-6415  
www.streetreeseminar.com  
714/639-6516

## MEETING SCHEDULE 2020

<b>October 22</b>	Building your Tool Box - Lisa Smith	Online
<b>December 17</b>	Scholarship/Officer Installation Kellogg West @ Cal Poly Pomona	Pomona, CA

**Stay Tuned for our 2021 Calendar of Events**

Interested in hosting a program in your community? We are interested in hearing from you!  
Contact [heather@streetreeseminar.com](mailto:heather@streetreeseminar.com)

## INDUSTRY EVENTS

Street Tree Seminar, Inc. remains fully operational at this time. We have shifted our team members to working remotely following the guidelines of global health officials, but all association work is continuing. Some of our support services will be operating on reduced hours in order to focus on business continuity and operations. At this time, most face to face events have been cancelled or postponed due to COVID-19 pandemic guidelines. There are many web based options available as well. We will share those as often as possible. Stay connected on our [FaceBook page](#)

<b>Oct 2</b>	<b>SHADE Tree Series Webinar</b> www.ucanr.edu	<b>Online</b>
<b>Oct 6</b>	<b>Invasive Forest Pest Workshop</b> www.ucanr.edu	<b>Online</b>
<b>Oct 7</b>	<b>WCISA Weeds and Soils</b> www.wcisa.net	<b>Online</b>
<b>Nov 9-11</b>	<b>WCISA Annual Conference</b> www.wcisaconnect.com	<b>Online</b>



**Various Webinar Providers:**

- Western Chapter ISA  
[www.wcisa.net/events](http://www.wcisa.net/events);
- TREEFund [www.treefund.org](http://www.treefund.org);
- Rainbow Treecare  
[www.treecarescience.com](http://www.treecarescience.com);
- Urban Forestry Today  
[www.urbanforestrytoday.org/](http://www.urbanforestrytoday.org/);
- and Forestry Webinar  
[www.forestrywebinars.net/](http://www.forestrywebinars.net/)

### MISSION

*"To provide a forum for professionals to share their experience, knowledge and expertise for the benefit of the membership and the enhancement of Southern California's Urban Forest".*



**EST. 1968**  
California Urban  
Forests Council

**Street Tree Seminar is your  
Los Angeles / Orange  
County Regional  
Forest Council**

### VISION

*"To enhance the health and beauty of Southern California's Urban Forest".*